

SR Phonares® II

Expressive esthetic denture teeth



Tooth Mould Chart

SR Phonares® II

SR Phonares® II *Typ*

SR Phonares® II *Lingual*

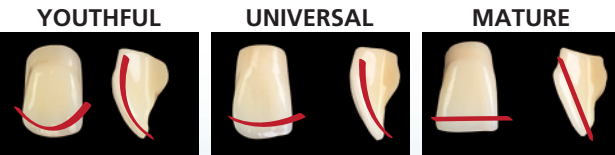


SELECTION CRITERIA

ANTERIOR TEETH

A range of tooth moulds designed to match the age and characteristics of the individual patient

A straightforward selection procedure
The tooth moulds are arranged into easy-to-identify groups according to an innovative new concept. The teeth that most accurately match the individual characteristics of the patient can be easily selected.



- Naturally shaped incisal edge
- Pronounced facial curvature
- Slightly abraded incisal edge
- Reduced facial curvature
- Heavily abraded incisal edge
- Flat facial curvature

In addition to the shade, the shape (form) and size of anterior teeth have to be matched to the individual characteristics of the patient. The SR Phonares II line of teeth offers 18 upper and 6 lower tooth moulds for the anterior region.

If possible, the anterior teeth should be selected directly on the patient according to the patient’s anatomical and facial characteristics. The following methods are recommended to facilitate the selection procedure:

CHAIRSIDE

FormSelector

The SR Phonares II FormSelector allows fast, easy and targeted selection of the appropriate anterior tooth mould.

Step 1 Determine the interalar width of the nose with the help of the Facial Meter. Select an appropriately sized tooth mould from the table.

Step 2 After having identified the correct size category, select the desired tooth form, soft or bold, in line with the shape of the patient’s face.

Step 3 Select the appropriate age group of the teeth according to the incisal and facial curvature of the SR Phonares II teeth.

LABSIDE

Model analysis

Determine the following reference points with the help of a model analysis:

a] Position of canines
Identify the first large pair of rugae; the midpoint of the labial surface of the upper canines is aligned at a distance of 9 mm.

b] Intersection point of central incisors
The labial surface of the central incisors is aligned at a distance of 7 mm to the centre of the incisive papilla.

The length of the dental arch measured across these three points can be used as a reference to select a set of anterior teeth with an appropriate width from the tooth mould chart.

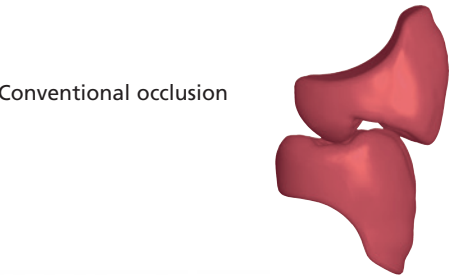
SELECTION CRITERIA

POSTERIOR TEETH

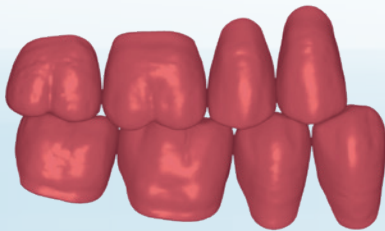
The SR Phonares® II product family incorporates two posterior tooth lines

SR Phonares® II *Typ*

With its occlusion concept, the SR Phonares II Typ is versatile for use in complete and partial dentures^[1].

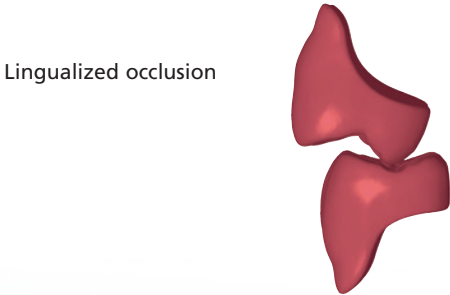


One-to-two setup

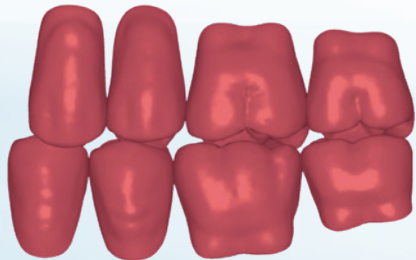


SR Phonares® II *Lingual*

The tooth mould of SR Phonares II Lingual takes the basic principles of a lingualized occlusion into account. With this specific design, lingualized occlusion is popular for implant-supported dentures^[1].

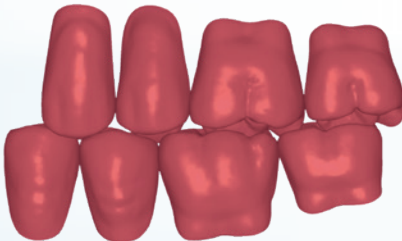


One-to-one setup



OR

One-to-two setup

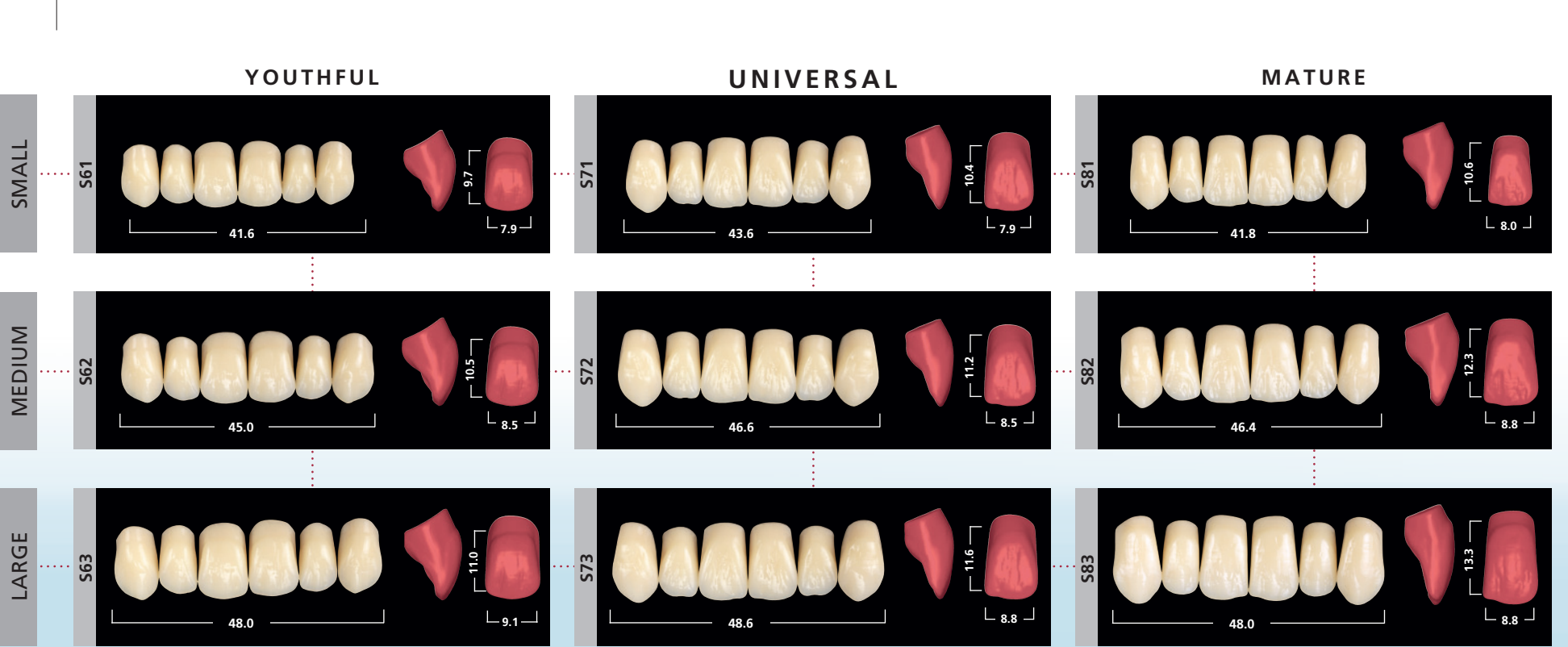


[1] Watzke R, Enggist L, Peschke A, Clinical observation SR Phonares II 6years, Ivoclar Vivadent, 2019.

ANTERIOR TEETH

SR Phonares II

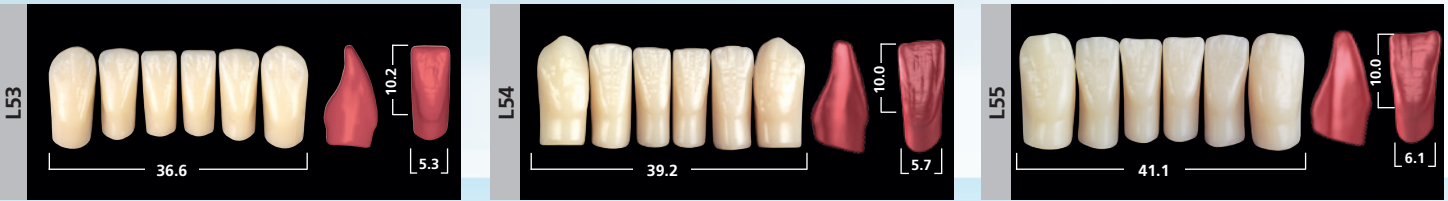
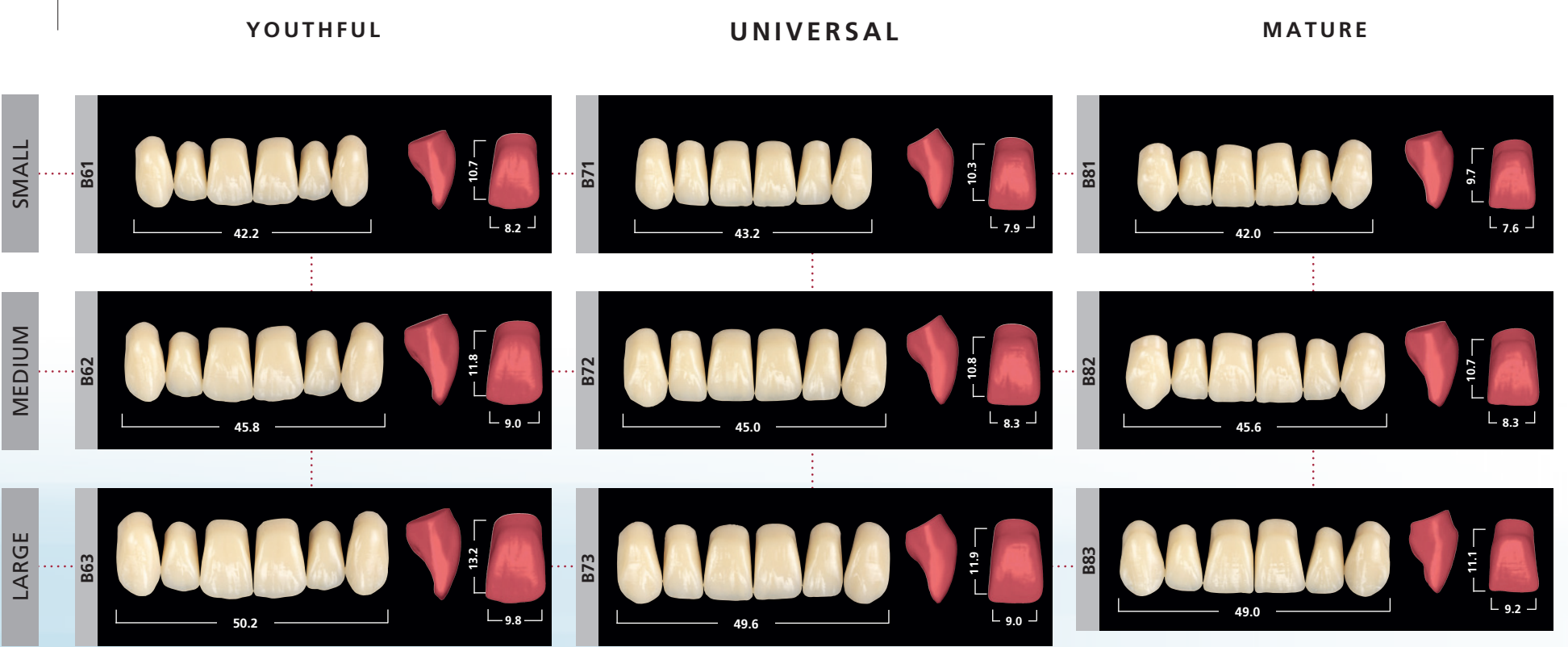
SOFT



ANTERIOR TEETH

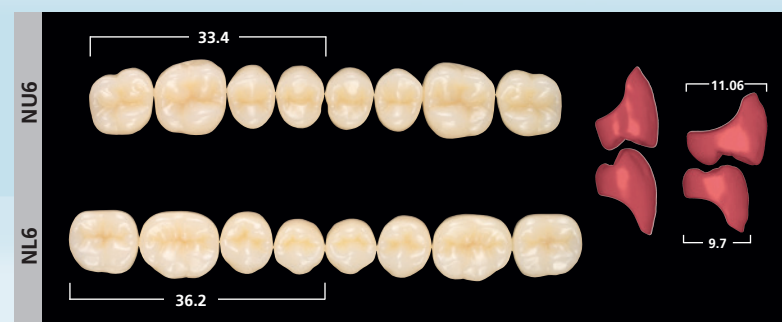
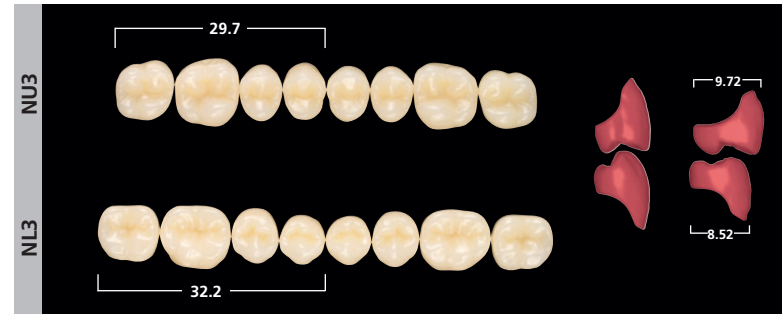
SR Phonares II

BOLD

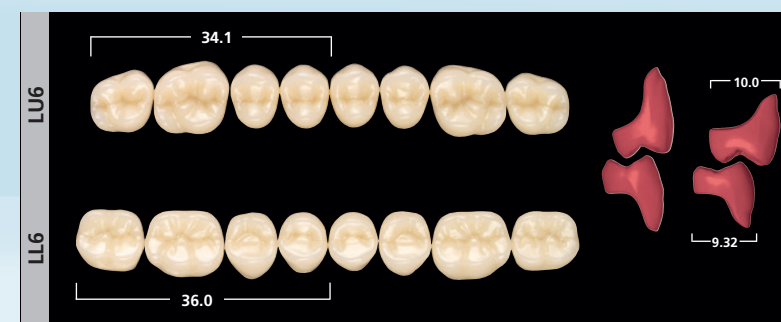
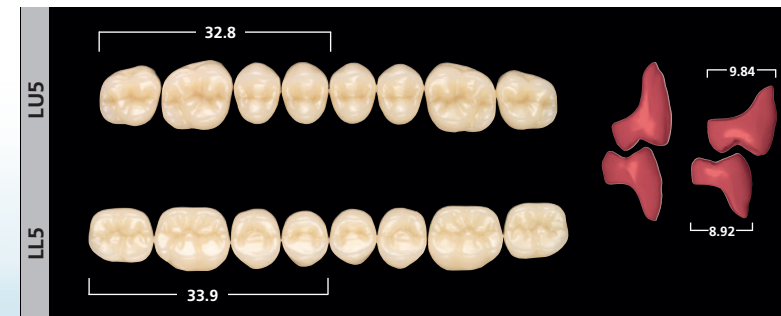
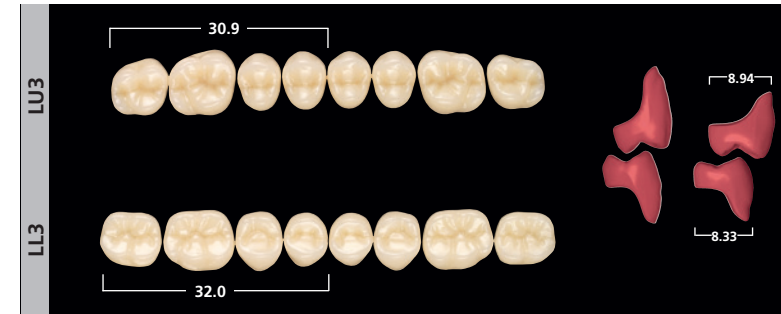


POSTERIOR TEETH

SR Phonares® II *Typ*



SR Phonares® II *Lingual*



PROCESSING INSTRUCTIONS

Shades

- 16 A–D shades
- 4 Bleach shades

Shade selection

The tooth shade is determined with the help of SR Phonares II shade guide.



The sample teeth of the SR Phonares II shade guide feature the same layering structure and material as the marketed original teeth. Shade deviations will be consequently reduced to a minimum. The shade selection with the patient should be carried out under defined light conditions (5,500 K colour temperature) or during daylight (preferably light from the north).

Minimum layer thickness

It must be ensured that the stability of the teeth and the correct shade effect are maintained. It is therefore recommended to observe the minimum layer thickness.

- **Anterior teeth: min. 2.5 mm**
- **Posterior teeth: Central fossa min. 2.0 mm, cusp tips min. 2.5 mm, cervical area min. 2.5 mm**

Important

To ensure that removable dentures remain functional in the oral cavity over longer periods of time, the following prerequisites should be met:

- **Dental materials may only be processed by dental professionals.**
- **Fabrication in the dental laboratory according to the principles of best practice.**
- To ensure a reliable material bond between PMMA/composite teeth and the denture base material, clean the teeth with steam, roughen them and apply monomer. When using an auto-curing polymer for finishing, it is recommended to create additional mechanical retentions.
- The teeth should not come into contact with a flame or direct heat (e.g. alcohol torch).
- Heat development as a result of too much pressure during grinding must be prevented.
- Contact with solvents must be prevented.

COMBINATION TABLE

		Anteriors		Posteriors	
		SR Phonares® II		SR Phonares® II <i>Typ</i>	SR Phonares® II <i>Lingual</i>
		Upper	Lower	Upper/Lower	Upper/Lower
SMALL	soft	S61	L50, L51	NU3 / NL3	LU3 / LL3
		S71	L50, L51	NU3 / NL3, NU5 / NL5	LU3 / LL3, LU5 / LL5
		S81	L50, L51	NU3 / NL3	LU3 / LL3, LU5 / LL5
	bold	B61	L50, L51	NU3 / NL3	LU3 / LL3
		B71	L50, L51	NU3 / NL3, NU5 / NL5	LU3 / LL3
		B81	L50, L51	NU3 / NL3	LU3 / LL3
LARGE	soft	S62	L52, L53	NU3 / NL3, NU5 / NL5	LU5 / LL5
		S72	L52, L53	NU5 / NL5	LU5 / LL5, LU6 / LL6
		S82	L52, L53	NU5 / NL5	LU5 / LL5, LU6 / LL6
	bold	B62	L52, L53	NU3 / NL3, NU5 / NL5	LU5 / LL5, LU6 / LL6
		B72	L52, L53	NU3 / NL3, NU5 / NL5	LU5 / LL5, LU6 / LL6
		B82	L52, L53	NU3 / NL3, NU5 / NL5	LU3 / LL3, LU5 / LL5
LARGE	soft	S63	L54, L55	NU5 / NL5	LU6 / LL6
		S73	L54, L55	NU5 / NL5, NU6 / NL6	LU6 / LL6
		S83	L54, L55	NU5 / NL5, NU6 / NL6	LU6 / LL6
	bold	B63	L54, L55	NU6 / NL6	LU6 / LL6
		B73	L54, L55	NU6 / NL6	LU6 / LL6
		B83	L54, L55	NU5 / NL5, NU6 / NL6	LU6 / LL6

Ivoclar Vivadent Training Centre



Always being on the latest standard of knowledge is a sign of your competence. Ivoclar Vivadent supports you in achieving this goal by conveying to you both knowledge about the latest products and know-how with regard to practice-oriented application and working techniques. The Ivoclar Vivadent ICDE continuously offers basic and advanced training courses tailored to your needs.

Have a look at our website.

This combination table is recommended as a guideline. In case of particular anatomical conditions, deviations are possible.



ISO 22112:1017

Descriptions and data constitute no warranty of attributes and are not binding.
© Ivoclar Vivadent, AG, Schaan/Liechtenstein

ivoclar.com

© 2022 Ivoclar Vivadent, Inc. Ivoclar and Phonares are registered trademarks of Ivoclar Vivadent, Inc.

Rev. 1 3/2022

United States

175 Pineview Drive
Amherst, New York 14228
716-691-0010
800-533-6825
Fax: 716-691-2285
www.ivoclarvivadent.com

Canada

1 - 6600 Dixie Road
Mississauga, Ontario L5T 2Y2
905-670-8499
800-263-8182
Fax: 905-670-3102
www.ivoclarvivadent.com

